



NoviiRemote

User's Guide

For Pocket PC / Windows Mobile Devices

NoviiRemote turns your handheld computer into a Universal Learning Remote Control! You can control all of your home entertainment equipment with one easy-to-use program.

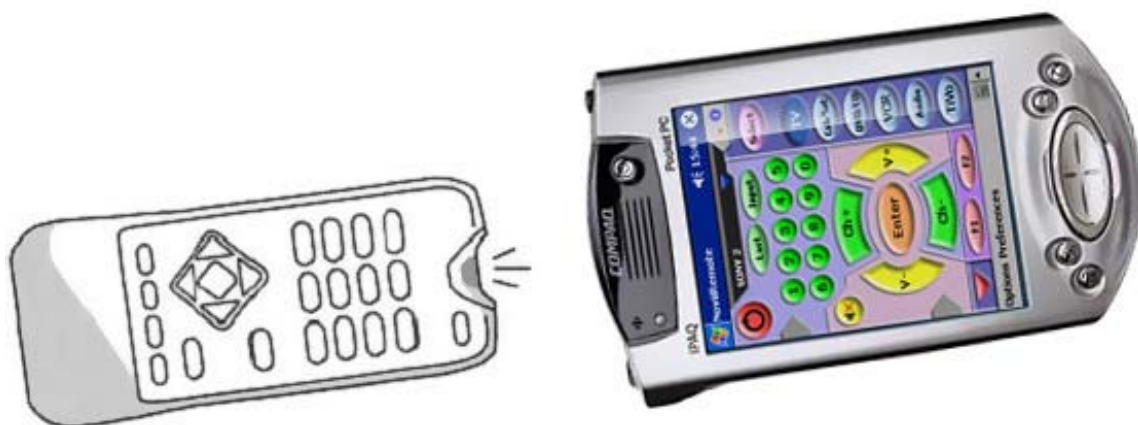
Table of Contents

1. Quick Start	2
2. Introduction	3
3. Install NoviiRemote PPC.....	4
4. Controlling Your Devices	5
5. Learning IR Codes	7
6. Home Devices Form	10
7. Hard Buttons Form	11
8. IR Setup.....	12
9. Preferences for Multiple Rooms.....	14
10. Troubleshooting	16
11. System Requirements.....	17
12. About NoviiMedia.....	18



1. Quick Start

1. After launching the NoviiRemote application (Installation is described in Section 3 below), check to see if your home entertainment devices match one or more of the pre-loaded codebases that come with NoviiRemote. First, select a category of devices (TV, Cab/Sat, DVD/CD etc.) Next, at the top of the screen, find and click on the arrow to open a pull-down menu of home entertainment devices. If you find a device that matches your equipment, select the device, and try operating your equipment (skip to Section 4 of this Guide). If you don't find any matching devices among the pre-loaded codebases, move on to the next step.
2. Place your handheld computer and the remote control from your device (TV, DVD, etc.) on a table, facing each other, with about 5 inches in-between. The infra-red ports of each device must be facing each other.
3. Next, launch the NoviiRemote program on your handheld computer, open the Options menu at the bottom of your screen, and select Home Devices.
4. Click on the type of the device you would like to "learn" the remote control codes from (TV, DVD, etc.). Click "Add", choose a category, assign a name to your new codebase, and click "Start Learning" to begin.
5. Click on any button on the NoviiRemote interface, then press the corresponding button on your remote control and **hold it until the handheld produces a beeping sound**, and then release the button on the remote. Repeat for each button you wish to use.
6. When you have completed learning all the buttons you wish to use, click "Stop Learning", and you are ready to use NoviiRemote as your remote control!





2. Introduction

NoviiRemote is a software program that provides a convenient means of controlling your home entertainment devices, such as TVs, VCRs, satellite and cable boxes, right from your handheld computer.

To use NoviiRemote, you must allow the program to "learn" the infrared signals from the standard remote controls you use to control your devices. You may alternatively try to use one of the pre-loaded codebases in NoviiRemote (see section 1.1 of this Guide).

The program works by beaming infrared signals stored in special databases called codebases.

To set up the program for your device, select the proper category (TV, Cab/Sat, DVD/CD, VCR, Audio or PVR) from the Home Devices menu, click the Add button and then assign a name to the active codebase that will control your device. Next, simply tap the virtual images of each remote button on the screen of your handheld while pushing the corresponding buttons on your remote control, one-by-one.

Use the Home Devices form to do routine operations on your codebases, including creation, learning, assigning a hot codebase, deletion, etc. (see Section 6 – Home Devices).

Use the Hard Buttons form to learn what each button on your handheld will do, or to customize the hard buttons on your handheld with the most typical actions (see Section 7 – Hard Buttons). For example, you may customize the hard buttons to change the channels and the volume level, or any other remote function.

Use the Preferences menu described in Section 9 to set up the remote for each room of your house.

TIPS:

- Click the Options menu at the bottom of your Pocket PC screen for performing many of the required operations in NoviiRemote.
- Click the Select button in the upper right corner of the interface to quickly enter the Home Devices menu.

For more information including Tutorials, Online Support and FAQs, please visit our website at www.novii.tv



3. Install NoviiRemote PPC

First download the free trial version of NoviiRemote. Check thoroughly that NoviiRemote is capable of controlling your home devices. After confirming that NoviiRemote works for you, we encourage you to order the full commercial version of NoviiRemote.

NOTE:

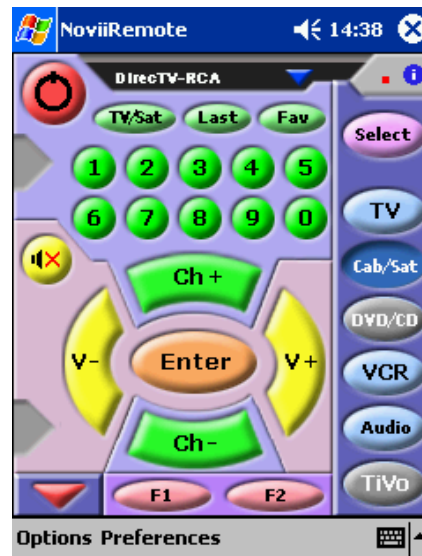
The only difference between the trial version and the full commercial version is an expiration period built into the trial version. The trial version will stop working 10 days after the very first launch.

Installation

1. Download the zip-file containing NoviiRemote PPC software.
2. Extract the contents of the zip-file to a temporary folder on your PC.
3. Put the PDF file (this document) into a convenient place, where you can access it again. This is the User Guide in PDF format.
4. Run the Setup.exe file and follow instructions.
5. After completing the Active Sync operation you can immediately begin using NoviiRemote PPC!



4. Controlling Your Devices



To select a device you wish to control, press one of the six category buttons on the right side of the NoviiRemote interface: TV, Cab/Sat, DVD/CD, VCR, Audio or TiVo. In turn, NoviiRemote displays a virtual remote screen containing a set of buttons typical for the selected category of home devices. Next, select a hot codebase capable of controlling your device, by clicking on the small triangle at the top panel of the screen, and selecting the appropriate codebase from the pull-down list.

To control your device, just tap the virtual images of the remote buttons on the screen of your handheld, while pointing your handheld computer at the home entertainment device.

TIPS:

- Click the red Arrow in the lower left-hand corner of the user interface to enter a second screen for each device, which provides additional functionality and more options for using NoviiRemote.
- Click the red Arrow again to return to the primary interface for each device.
- Use the Hard Buttons on your device for the actions you use the most, by customizing the commands (see Section 7).
- Try using your thumb or fingernails to click the remote buttons on the screen of your handheld. Some users prefer to use one hand to operate NoviiRemote. Keep your stylus in place, use the hard buttons and your thumb or fingernails for everything!



-
- If NoviiRemote does not control your device, first check to verify that you have selected the appropriate hot codebase, using the pull-down list at the top of NoviiRemote.
 - If you do not have the appropriate codebase, press the Select button or open the menu and make a new codebase by using the Add button in the Home Devices form.



5. Learning IR Codes

If your device does not have a preassigned codebase (section 1.1), it is easy to "learn" a new codebase from your original remote. This is done by placing your handheld computer and the remote control from your device (TV, DVD, etc.) on a table, facing each other, with about 5 inches in-between. **The infrared ports of each device must be facing each other.**



Open the Options menu at the bottom of your screen and select Home Devices. Click on the type of the device you would like to "learn" the remote control codes from. Click "Add", choose a category, and assign a name to your new codebase.

The screenshot shows the 'NoviiRemote' application window with a blue header bar containing the Windows logo, the text 'NoviiRemote', the time '14:41', and an 'ok' button. The main content area is titled 'New Codebase' and contains the following elements:

- A 'Select Category:' label followed by a dropdown menu showing 'TV'.
- A 'Name:' label followed by a text input field containing 'new tv'.
- Two radio button options: 'Single Mode (recommended)' (which is selected) and 'Double Mode (on problems only)'.
- Two buttons at the bottom: 'Start Learning...' and 'Cancel'.
- An information icon and a small keyboard icon at the bottom right of the dialog.



In most cases it is sufficient to perform learning in Single Mode. However, if you face problems with switching on your TV receiver to channels like 11, 22, 33, etc, or if the Mute button does not work properly, then you should to perform learning in Double Mode (this requires double learning of each button). Double learning enhances the infrared codebase stored in your handheld computer.

Next, click "Start Learning" to begin, and you will see the following screen:



To learn a button, for example Ch+, first tap its virtual image on the screen of the handheld. Then press the button 'Ch+' on your remote and hold it until the handheld produces a beeping sound, and then release 'Ch+' on the remote. You will notice a change in the button's image on the handheld as you complete this process.

NOTE:

When learning in Double Mode, the program prompts you to perform the learning steps two times for each button.

TIPS:

- Click the red Arrow in the lower left-hand corner of the user interface to enter a second screen, which contains additional buttons to learn.
- Click the red Arrow again to return to the primary interface.



-
- Use the buttons F1 – F4 in NoviiRemote for special remote control buttons or buttons on your original remote which do not have a corresponding button on the NoviiRemote interface.

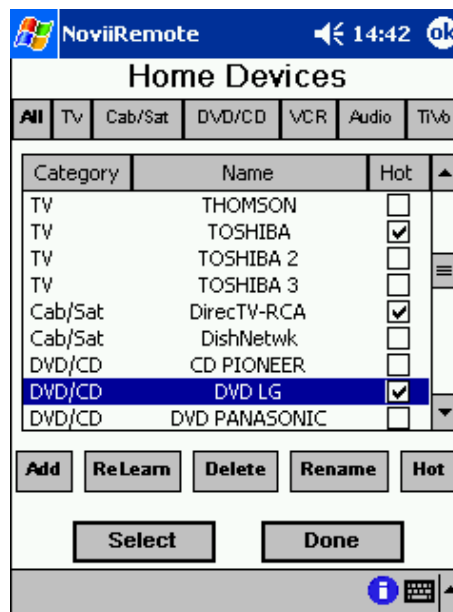
When you have completed learning all the buttons you wish to use, click "Stop Learning", and you are ready to use NoviiRemote as your remote control!



6. Home Devices Form

Use the Home Devices form to perform routine operations on your codebases:

1. Use the All, TV, Cab, etc. buttons to filter a list of codebases.
2. Use the Add button to create a new codebase and learn it.
3. Use the ReLearn button to double learn the selected codebase (when certain buttons are not learning or working properly).
4. Use the Hot button to make the selected codebase hot. If the codebase is already hot, its category will not be assigned with any other codebase.
5. Use the Delete button to delete the selected codebase. All infrared signals stored inside the deleted codebase will be lost, and you will not be able to control the given device anymore! To restore the codebase you will have to perform learning from your original remote control.
6. Use the Rename button to rename the selected codebase.



7. Use the Beam button to send the selected codebase to another handheld.
8. Use the Select button to make the selected codebase hot and return to the virtual Remote screen from which you can immediately control your device.
9. Use the Done button to close the Home Devices form and return to the Remote screen.



7. Hard Buttons Form

Hard buttons are at the bottom of your handheld, and are used in the program to perform remote control functions. Use the Hard Buttons form to customize the hard buttons of your handheld with the actions you perform most often. For example, you may customize the hard buttons to change the channels, the volume level, or any other functions you perform most often. **Spend a moment to customize your hard buttons to get the most enjoyment using NoviiRemote!** By doing so, you won't have to take out and use your stylus, and can operate NoviiRemote with just one hand.

Button	Assignment
Button 1	TV (Mute)
Button 2	TV (Power)
Up	Cab/Sat (Ch+)
Down	Cab/Sat (Ch-)

Category: [] Use Button: []

Restore NoviiRemote Defaults

Restore WinCE Defaults

OK Cancel

To customize a hard button, first select the given button in the list of available buttons. Next, select proper values in the “Category” and “Use Button” list boxes.

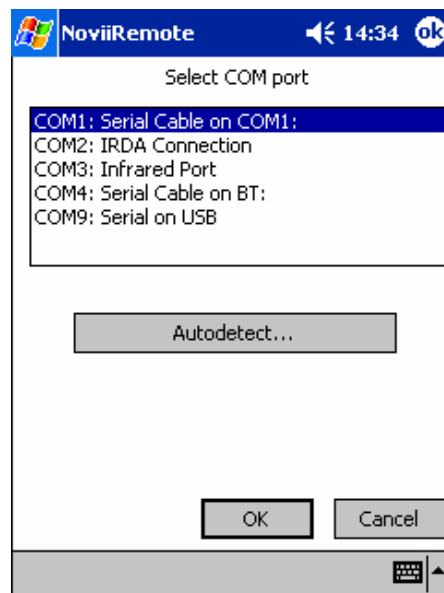
Important! The Hard Button assignments function only on the virtual remote screen of your handheld. They do not work from within the Home Devices, Preferences and other screens.

The special button 'Restore WinCE Defaults' is used to restore OS assignment of the hard buttons.



8. IR Setup

This section describes manual configuration of the IR Setup menu in NoviiRemote for Pocket PC, and should be used only when trouble-shooting.



Important: It is usually not necessary to tune your Pocket PC by means of the IR Setup form, as NoviiRemote software does this automatically. However, if NoviiRemote issues messages like "COM port busy" you should go to the IR Setup menu and tune the infrared driver manually.

The IR setup form contains a list of COM-ports available on your Pocket PC. This menu usually looks as follows:

- COM1: Serial Cable on COM1
- COM2: IrDA Connection
- COM3: Infrared Port
- COM4: Serial Cable on Bluetooth
- COM9: Serial on USB

Step 1. The best way to tune the driver is to press the Autodetect button from within the IR Setup menu. In response, NoviiRemote detects the correct COM-port and pre-selects the corresponding line from the list of available COM-ports. Next, press OK, and go to the Home Devices form, create a new codebase, learn 2-3 buttons from your original remote control and try to control your home device. If you can now control your home device, you won't ever need to go to the IR Setup form.



Step 2. If NoviiRemote still issues "Com port busy" messages, then you have to tune the driver manually. Just select another COM port from the list of available ports, press the OK button, and check again if NoviiRemote controls your home devices. Try all the ports on the list until you find the correct one.

Step 3. If you cannot find the proper COM-port, try to change the way in which your Pocket PC receives infrared signals. Open the Start menu of your Pocket PC, select the Settings item, and press the Connections tab. The Beam settings window must appear, with the Receiving check box. Change the value of the box to the opposite one and close the window by means of the Ok button. Next, return back to the IR Setup form of NoviiRemote, and repeat Step 1 and Step 2.

TIP: Usually USB and Bluetooth related COM-ports do not suit the needs of NoviiRemote.



9. Preferences for Multiple Rooms

It's easy to set up NoviiRemote for each room of your house!



Use Preferences to set up NoviiRemote for each room of your house. Preferences will give you an easy and quick method of switching all devices in the given room to the correct settings.

NoviiRemote allows you to save the following preferences:

- The names of up to six codebases which you've made hot, for each room you set up in Preferences.
- Custom assignments to hard buttons.

To prepare Preferences for a given room please perform the following actions:

- Launch the Home Devices form, and identify the codebases capable of controlling the home devices located in the given room. Make those codebases hot (in use) by clicking the Hot button. You should see a filled check box appear next to the device.
- Next, launch the Hard Buttons form and tune the hard buttons for your device (see Section 7). Try to assign the commands you use most frequently in this room to the hard buttons for ease of use.
- Launch the Preferences menu, select the Save item from the menu, enter the name of the database where your preferences will be saved (for example Kitchen, Lining Room, etc.) and press the Save button.



NoviiRemote allows you to quickly load previously saved preferences for each room, from their respective databases. To load the preferences for a given room, launch the Preferences menu, select the Load item from the menu, then select the name of the database in the list and click the Load button. (Note: you must first set up your preferences as described in the steps above!)

Use the Delete button to delete Preferences you no longer need.



10. Troubleshooting

If you experience difficulties controlling your home device, try the following:

- First, be certain that you have either selected and tested a pre-loaded codebase which matches your device (Section 1.1), or have created a new codebase in the Home Devices form (Section 5).
- Next, confirm that you have learned the infrared codes for your device, as described in Section 5.
- While learning remote commands, be certain that the infrared ports of the remote and your Pocket PC handheld are facing each other.
- Next, verify that you have selected the appropriate codebase, whose name should appear at the top of the Remote interface.
- Try different distances and angles for beaming the infrared signals from your handheld computer to the entertainment device.
- If NoviiRemote issues messages like "COM port busy", try to manually tune the infrared driver of the NoviiRemote (see Section 8 above for details).
- If your home device still does not work with NoviiRemote, next try "Double Learning" the infrared codes. With some home devices, double learning will help make the infrared signals stored in the codebase more precise. See Section 5 above for details.
- Be certain that the batteries in your handheld are not weak. If depleted, replace or recharge the batteries in your handheld and try again.
- Be certain that the distance from your device to the handheld is sufficient for NoviiRemote to work properly. Depending on the model of the handheld and the model of equipment you are trying to control, the maximum range is 5-40 feet.
- If the main user interface does not contain some of the buttons needed to control your device, click the red Arrow in the lower left-hand corner of the interface to enter a second screen, which provides additional functionality.
- If you face problems with switching on your TV receiver to channels like 11, 22, 33, etc, or if Mute or other buttons do not work properly, then you must re-learn your codebase by selecting ReLearn from the Home Devices Form. Go to the Home Devices form by pressing the Select button or opening the menu. Next, select the problematic codebase in the list of codebases and press the ReLearn button. Then check the Double Mode box and click "Start Learning" to begin. When learning in Double Mode, the program prompts you to perform the learning steps two times for each button.
- If problems persist, please consult our website www.novii.tv for additional troubleshooting solutions. Check out the Tutorials, FAQs and Online Support for NoviiRemote.

If you receive a message like "IR port not found" when launching NoviiRemote on your Pocket PC, go to the Start menu, click the Settings item, choose the Connections tabs, click the Beam button and try to clear the checkbox with the name "Receive all incoming beams ...".



11. System Requirements for NoviiRemote PPC 2.3

Requirements for version 2.3 released in June 2005:

- Windows CE 3.0, Pocket PC 2002/2003, Windows Mobile, Windows Mobile Second Edition,
- 2.5 MB of free memory.

COMPATIBLE WITH:

- HP iPAQ h6300, h6315, h6325, h6340, h6365, **range is over 20 feet**
- HP iPAQ rx3115, rx3715, **range is over 20 feet**
- Dell Axim X3, X3i, X30, X5, x50, x50v, **range is 10-20 feet**
- Acer n30/n35, **range is up to 20 feet**
- Fujitsu Siemens Pocket Loox 720, **range is over 18 feet**
- HP iPAQ hx4700, hx4705
- HP iPAQ rz1710, rz1715
- HP iPAQ h1910, h1915, h1920, h1930, h1940, h1945
- HP iPAQ h2210, h2215, h4150, h4155, h4350, h4355
- HP iPAQ h5150, h5155, h5450, h5455, h5550, h5555
- HP iPAQ hx2100 Series, hx2400 Series, hx2700 Series
- HP Jornada 560 series
- Compaq iPAQ 3100, 3600, 3700, 3800 and 3900 series
- O2 XDA II *
- i-Mate Pocket PC
- Qtek 2020
- T-Mobile MDA
- Toshiba e310, e330, e335, e350, e355, e400, e405
- Toshiba e740, e750, e755, e800, e805
- ViewSonic Pocket PC V35, V37
- Fujitsu Siemens Pocket Loox*
- etc. **

***Warning:** The infrared port of some devices, such as HP iPAQ h4155, and others, is slightly underpowered, and effective range may be 1-1.5 meters. However, for many devices the range is 3-7 meters.

****NOTE:** The absence of a particular device from this list does not mean that it is incompatible with NoviiRemote; it simply means that it has not been thoroughly tested.

Warning: The program does not support old devices using MIPS and SH3 processors. .



12. About NoviiMedia

NoviiMedia is engaged in the development of several lines of products for handheld computers. We are committed to delivering high quality solutions to the growing number of handheld owners who use their devices for fun and entertainment.

Check Novii's web site for FAQs, Online Support, Tutorials and other information about our products at:

www.novii.tv

www.novii.com

If you can't find answers to your questions on the web site, please write an e-mail to:

service@novii.com

To receive information about upgrades to this software and additional news from Novii about our products, sign up for the **NoviiNewsletter** on our website:

www.novii.tv/support