



WAWA 1.0
Novii Alarm software
for Windows Mobile devices
User's Guide

Table of Contents

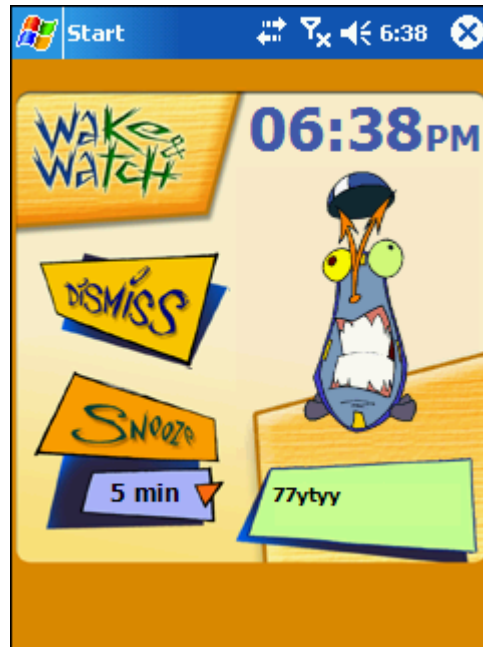
Introduction	2
1. Quick Start	3
2. Install WAWA software.....	4
3. Alarms List	5
4. Alarm Options form	6
4.1. Alarm Description	7
4.2. Setting the alarm	7
4.3. Setting Reminder Actions	8
5. How to Learn infrared signals	9
5.1. Add / Edit IR Signal form	10
Learning.....	11
Comment	12
Advanced.....	12
Completing.....	13
6. How to Assign a Sound to Alarm	14
7. Alarm Options, More.....	15
8. The Reminder	16
9. Infrared Setup	16
10. Troubleshooting	18
11. System Requirements.....	19
12. About NoviiMedia.....	21



Introduction

WAWA is a Novii alarm software program for Pocket PC and Windows Mobile devices. This is the only alarm software that will wake you up by turning on your home theater system!

WAke and **WA**ch!



WAWA has the ability to set an unlimited number of alarms, each alarm having various characteristics such as an alarm time, which days of the week it occurs, description, etc. You may also assign a sound and infrared signals to the alarm.

When the alarm goes off, WAWA beams the assigned infrared signals to control your home equipment and then plays the assigned sound the specified number of times. These actions will be repeated every five minutes until you press the **Dismiss** button on the **Reminder** screen.

Note. In order to control your home equipment, you should first learn the infrared signals using the original remote controls.

Main features:

- An unlimited number of alarms.
- An alarm may go off any day of the week. Or it may go off once and then expire.
- An unlimited number of sounds (at present only WAV format supported).
- Remote control function allowing WAWA to turn on your TV set and switch it to your favorite channel.
- Snooze function.



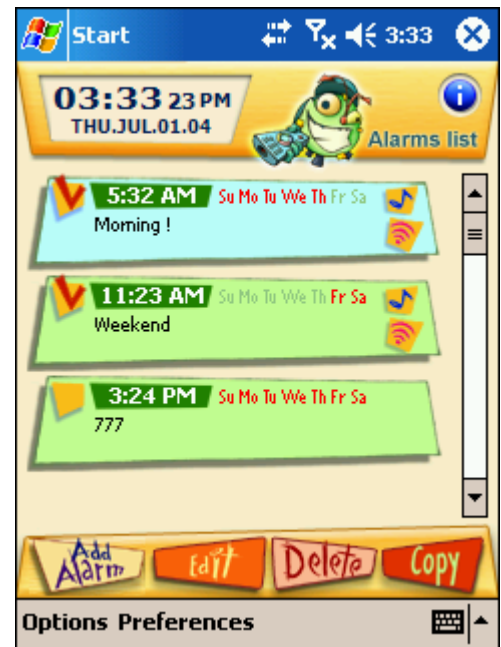
1. Quick Start

1) Install WAWA software to your Windows Mobile device. See Chapter 2 for installation details.

2) Run WAWA software on your Windows Mobile device. The **Alarms List** form will appear.

3) Open the **Preferences** menu, select the **Infrared Setup** item, and then find the proper COM-port for infrared communication. See Chapter 9 for details.

4) Press the **Add Alarm** button to create an alarm. The **Alarm Options** form will appear.

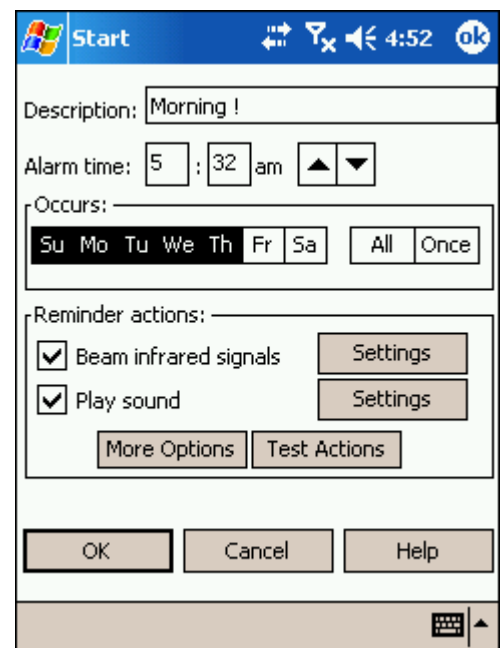


5) Enter the **Description** of the alarm, and the time and days of the week when the alarm is to go off.

6) Check the **Play Sound** control and press the **Settings** button (right side of the control) to set up a sound to be played when the alarm goes off, see chapter 6 for details.

7) If you want WAWA software to turn on your home theater, check the **Beam Infrared Signals** control and press the **Settings** button (right side of the control) to learn infrared signals, see chapter 5 for details.

8) Close the **Alarm Options** form and return to the **Alarms List** form.





9) Now you can exit WAWA software and turn your Windows Mobile device off.

10) Put the device close to your home theater so that the device's infrared port may control your units. At the specified time WAWA software should activate, turn your home theater on and play the pre-assigned sound the specified number of times.

2. Install WAWA software

Please visit our website at <http://www.novii.tv/pocketpc/wawa> for more information how to download and order the newest version of WAWA software.

TIP:

First download the software and check thoroughly that WAWA is capable of controlling your home equipment. After confirming that WAWA works for you, we encourage you to order the license.

NOTE:

WAWA is represented by the single version. This is not a demo version! This is a complete fully-functional application. However, without the activation key, WAWA suspends its work ten days after the first launch on your Windows Mobile device. To resume the work of WAWA software you will have to order the application and receive the activation key.

The only difference between the trial and full mode is the expiration period.

Installation

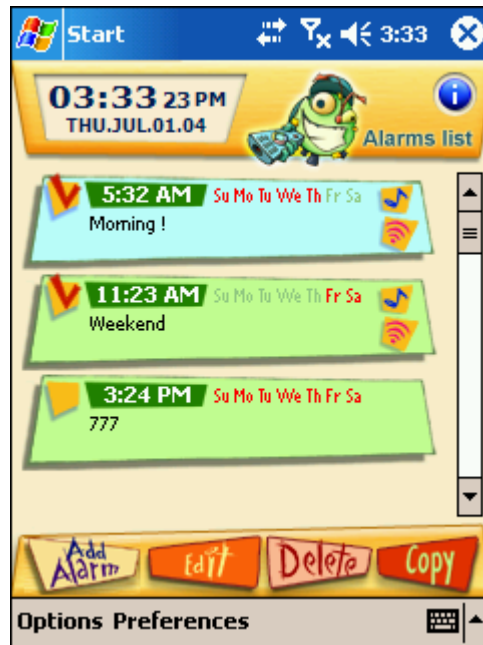
1. Download the zip-file containing WAWA software to any folder on your Windows computer.
2. Extract the contents of the zip file to the folder.
3. Put the WAWA_UserGuide_10.pdf (this document) in a place where you will be able to access it again. This is the User Guide in PDF format.
4. Read the end user license agreement carefully for NoviiMedia software, license.txt.
5. Refer to the readme.txt document for information concerning the contents of the zip-file and the installation instructions.
6. After completing the ActiveSync operation you can immediately begin using WAWA software!



3. Alarms List

The **Alarms List** form is the main form of the application. This is a form which is launched the moment you launch WAWA.

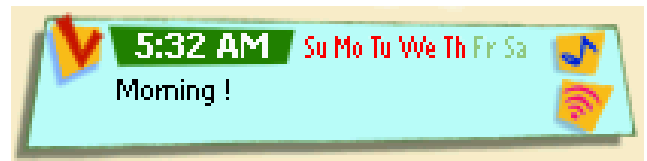
The **Alarms List** form shows which alarms have been created.



Each alarm occupies a part of the screen where the following alarm options are displayed:

]

- The time the alarm is to go off.
- Days of the week when the alarm is to go off.
- The description of the alarm. When the alarm goes off, the **Reminder** screen with this description will be shown.
- The checkbox control at the upper left-hand corner of the area shows whether the alarm is active or not.
- Two small icons at the right-hand side of the alarm area notify you whether the sound and infrared signals are assigned to the alarm or not.



Use the checkbox control at the upper left-hand corner of the alarm area to activate the alarm. The active alarm (with the control checked on) will go off on every specified day of the week at the



specified time. If the alarm is active and no day has been specified (a so-called “once” alarm), the alarm will go off on the day closest to the specified time, and then become non-active. The non-active alarm will not go off at all.

There are **Add Alarm**, **Edit**, **Delete**, and **Copy** buttons at the bottom of the form. Use these buttons to create and make changes to the alarms.

Use the **Add Alarm** button to create a new alarm. The **Alarm Options** form is launched, where you will then be prompted to enter the alarm options and assign infrared signals and a sound. See chapter 4 for details.

Tap the alarm area to select the alarm.

Use the **Edit** button to launch the **Alarm Options** form which will allow you to edit the options of the selected alarm. See chapter 4 for details.

Use the **Delete** button to delete the selected alarm.

Use the **Copy** button to create a copy of the selected alarm.

TIPS:

- A non-active alarm will not go off. However, the options of the non-active alarm will not be lost.
- When deleting the alarm, you delete all its options including the learned infrared signals. So if you do not want the alarm to go off for a while, it is better to make it non-active than to delete it at all.

If you already have some alarms with the infrared signals assigned to them and want to create another alarm with the same infrared signals, just use the **Copy** button, and you will avoid having to learn infrared signals again.

Important. If you are going to control your home theater, open the **Preferences** menu, select the **Infrared Setup** item from the menu, and find the proper COM-port for controlling your equipment.

4. Alarm Options form

This form is launched from the main form of WAWA software when you are creating a new alarm or are going to edit the existing alarm.



Use this form to set the alarm options and specify the actions to be executed when the alarm goes off.

4.1. Alarm Description

You may enter the arbitrary text in the **Description** field. When the alarm goes off, the **Reminder** is launched with the text entered here.

4.2. Setting the alarm

Use the **Alarm time** and **Occurs** controls to specify the time and days of the week when the alarm is to go off.

Use the **Alarm time** controls to set the time when the alarm is to go off.



Use the **Occurs** controls to specify days of the week when the alarm is to go off. Just select the necessary days on the list: Su, Mo, Tu, We, Th, Fr, Sa.

Occurs: _____

Su	Mo	Tu	We	Th	Fr	Sa	All	Once
----	----	----	----	----	----	----	-----	------

You may also press the **All** button if you want the alarm to go off every day of the week.

Press the **Once** button if you want the alarm to go off the day closest to the specified time, and then become non-active.

4.3. Setting Reminder Actions

Use the **Reminder actions** group of controls to specify the actions to be executed when the alarm goes off.

Reminder actions: _____

<input checked="" type="checkbox"/>	Beam infrared signals	Settings
<input checked="" type="checkbox"/>	Play sound	Settings
More Options		Test Actions

Check the **Beam infrared signals** control to on if you want infrared signals to be beamed when the alarm goes off. Press the **Settings** button (right side of the checkbox control) to launch the **Infrared Signals** form. The form allows you to learn infrared signals using original remote controls. See chapter 5 for more information how to learn infrared signals.

Check the **Play sound** control to on if you want sound in the wav format to be played when the alarm goes off. Press the **Settings** button (right side of the checkbox control) to launch the **Assign a Sound to Alarm** form. The form allows you to select the sound to be played. It also allows you to specify the number of times the sound is played and the duration of the pause between repeats. See chapter 6 for more information on how to assign a sound to an alarm.

Press the **More Options** button to specify some additional details of the **Reminder** work, see chapter 7 for more information.



Press the **Test Actions** button to verify how the assigned sound is played and how the assigned infrared signals control your home equipment.

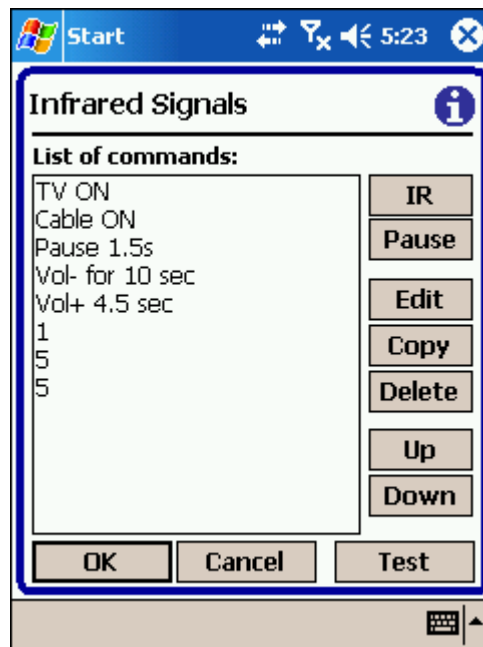
Press the **OK** button to accept the new alarm options you have set and return to the main form of the application.

Press the **Cancel** button to decline the alarm options you have set. All the changes you made will be lost.

5. How to Learn infrared signals

The **Infrared Signals** form is aimed for learning infrared signals, which will control your home equipment.

Note. This form is launched from the **Alarm Options** form by pressing the **Settings** button right of the **Beam infrared signals** control.



The **Infrared Signals** form displays a list of **commands**. Two types of commands are available: infrared signals (IR) and pauses.

When the alarm goes off, WAWA simply executes the commands from the list one by one. An IR signal is beamed, thus controlling your home equipment. A pause command generates a delay in the execution process.



TIPS:

- Usually the TV set and other equipment cannot work just after you have turned the power on. You have to wait for 1-2 seconds until units will be able to accept the next command (channel change, volume change, etc.). In such a case entering a pause command with the proper delay (in seconds) into the list just after the Power ON signal is a must.
- You should add as many infrared commands as necessary in order to turn on all the units, to switch to the desired TV channel, to set the desired volume level, etc.
- To set the desired level of volume you may use a trick similar to that on the screenshot above. First, the volume is decreased for ten seconds. It is assumed that ten seconds are enough to set the minimum level of volume regardless of the level the unit has at the moment of its being turned on. Next, the volume is increased from the minimum level to the desired one.

Simply tap a command in the list to select it.

Press the **IR** button to add an IR signal into the list. You will be prompted to learn the IR signal using your original remote control. See section 5.1 for details.

Press the **Pause** button to add a pause into the list. You will be prompted to enter the duration of the delay in seconds. See section 5.2 for details.

Use the **Copy** button to add a copy of the selected command into the list.

Note: a new command is always placed just after the selected one.

Use the **Edit** button to change the options of the selected command.

Use the **Up** and **Down** buttons to move the selected command to the desired position inside the list.

Use the **Delete** button to remove the selected command from the list.

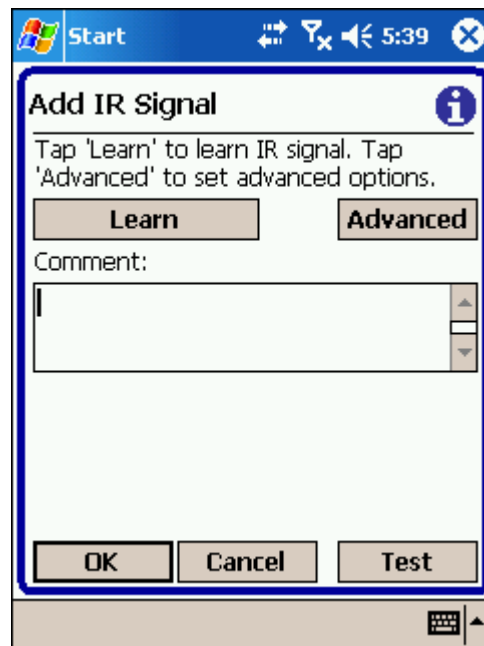
Use the **Test** button to verify how the list of commands controls your home equipment.

Press the **OK** button to save the list of commands and return to the **Alarm Options** form.

Press the **Cancel** button to cancel editing the list of commands. All the changes you made will be lost!

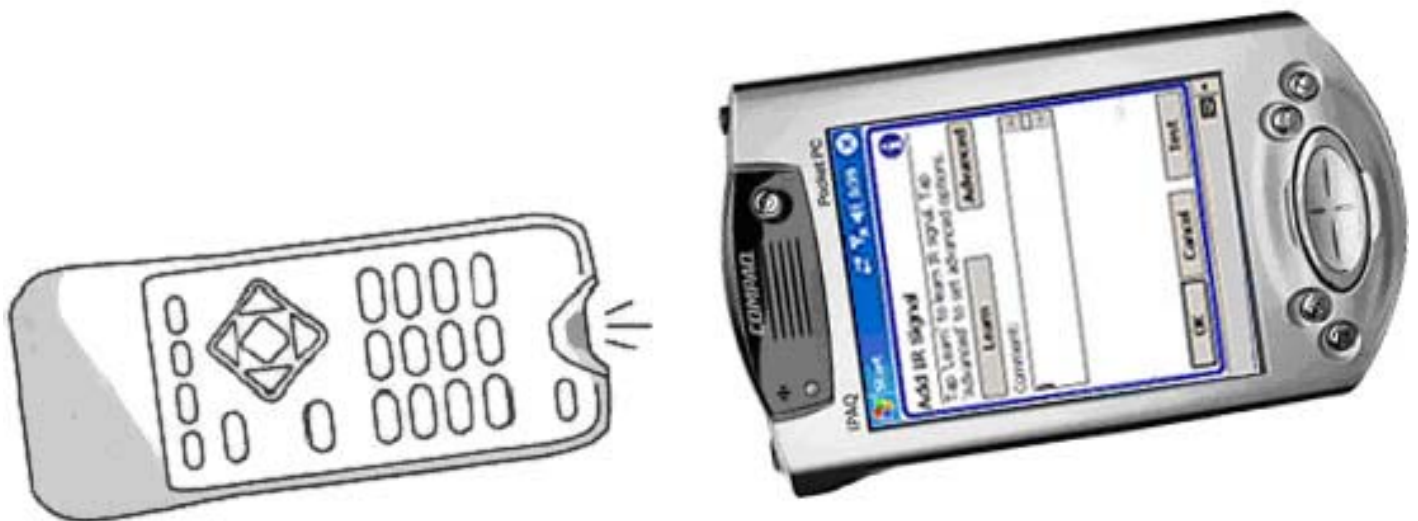
5.1. Add / Edit IR Signal form

Use the **Add IR Signal (Edit IR Signal)** form to learn an infrared signal from the original remote control.



Learning

Important: Before beginning learning, make sure to place your handheld computer and the remote control from your device (TV, DVD, etc.) on a table, facing each other, with about 5-10 inches between. **The infrared ports of each device must be facing each other.**



To perform learning, first press the **Learn** button on the WAWA screen. The WAWA software responds by displaying a message with a brief explanation on how to proceed. Next, press and hold the button on the original remote control, e.g. Power ON, until WAWA software displays a message "Learned with success". Release the button on the original remote and return back to the **Add / Edit IR Signal** form.



Note. If WAWA software does not receive any infrared signal from the original remote control in 20 seconds, learning will be automatically canceled.

TIP:

- If you have pressed the **Learn** button and then realized that you do not want to perform learning, just wait for 20 seconds and learning will be cancelled automatically.

Use the **Test** button to verify how the learned IR signal controls your home equipment. If it fails to do this, try to learn again. On problems with learning please refer to chapter 10.

Comment

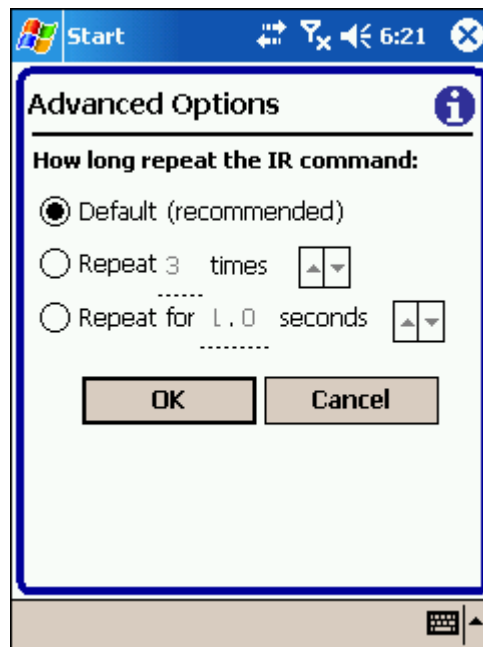
You may enter the text of your choice into the **Comment** field.

TIP:

- WAWA software ignores this text. However, it is recommended to enter the text explaining what the IR signal does. For example, you may enter the text “TV Vol+” if the IR signal increases the volume of your TV set. Without the proper comments you simply will not be able to correct infrared signals in a few days.

Advanced

Press the **Advanced** button if you want to force WAWA software to beam the learned IR signal in an unconventional manner.



If the IR signal changes the volume, use the “Repeat ... times” option in order to specify the



number of small steps to be performed in order to achieve the necessary level.

Sometimes you have to keep the button of the original control pressed for several seconds in order to execute some unusual action, for example to start recording. The “Repeat for ... seconds” option is intended for such cases.

In all other cases use the “Default” option.

TIP. In most cases there is no need to launch the **Advanced Options** form. Use the form only in the two cases described above.

Press the **OK** Button to accept the new options and return back to the **Add / Edit IR Signal** form.

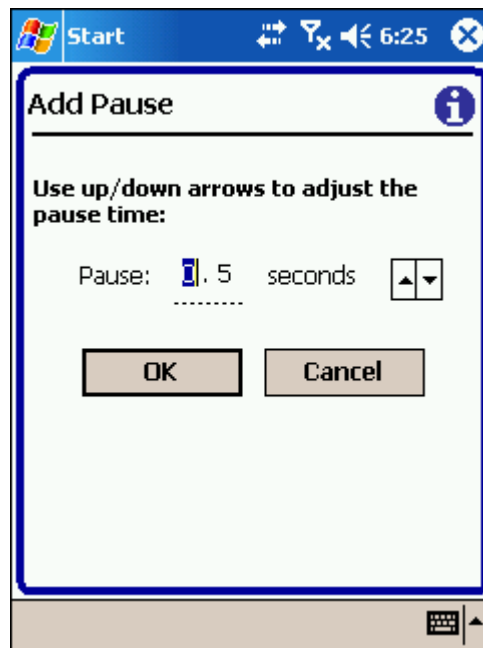
Completing

Press the **OK** button to save the options of the IR signal and return to the list of commands.

Press the **Cancel** button to cancel editing. All the changes you made with the infrared command will be lost!

5.2. Add / Edit Pause form

Use the **Add Pause (Edit Pause)** form to specify a delay between beaming IR signals.



Tap the screen left of the decimal point if you want to change the number of seconds. Tap the screen right of the decimal point if you want to set the number of decimal fractions.

Use **^** and **v** buttons to change the number of seconds / fractions.

Press the **OK** Button to accept the duration of the pause and return back to the **Add / Edit Pause**



form.

Press the **Cancel** button to cancel editing of the pause duration.

6. How to Assign a Sound to Alarm

The **Assign a Sound to Alarm** form is launched from the **Alarm Options** form by pressing the **Settings** button on the right side of the **Play sound** control.

The screenshot shows a mobile application window titled "Assign a Sound to Alarm". The window has a blue header bar with a "Start" button and system icons for signal strength, Wi-Fi, and battery. The main content area is white and contains the following controls: a text field for "Select a sound:" containing the path "{Windows}\Alarm1.wav" and a browse button "..."; a "Volume:" dropdown menu set to "9"; a "Play sound" dropdown menu set to "5" times; and a "with" dropdown menu set to "10" sec pause between. Below these controls is a "Test Sound" button. At the bottom of the window are "OK" and "Cancel" buttons. A small information icon is visible in the top right corner of the form.

Use this form to select the sound (in the wav-file format) to be played when the alarm goes off.

Press the “...” button to select the wav-file to be played. You may select the file from any folder on your Windows Mobile device.

Select the volume of the sound using the **Volume** drop list.

You may also specify the number of times the sound is played and the duration of the pause between repeats.

TIP:

- The shorter the sound the more number of repeats is recommended. Otherwise you may miss the alarm.

Use the **Test Sound** button to verify the volume of the sound and how often it repeats.

Press the **OK** button to accept the new settings, otherwise press the **Cancel** button.



7. Alarm Options, More...

Use this form to specify some additional details of the **Reminder** work.

Start [System Icons] 6:29 [OK]

Alarm Options, More... [Info]

Snooze:

Play again 5 min later.

Do not beam infrared signals

For more information, tap (i) button.

OK Cancel

Note. This form is launched from the **Alarm Options** form by pressing the **More Options** button.

When the alarm goes off, WAWA software automatically launches the **Reminder** (see chapter 8 for details) and executes the assigned alarm actions. First, WAWA beams the infrared signals and then plays the assigned sound the specified number of times.

If you ignore the **Reminder** screen, WAWA will repeat the alarm actions every 5 minutes until you press the **Dismiss** button on the **Reminder** screen. You may change the number of minutes by means of the **Play again** drop list.

TIP:

- Uncheck the **Do not beam infrared signals** control if you do not want the **Reminder** to beam the infrared signals again and again. In this case the **Reminder** will beam the infrared signals one time only.

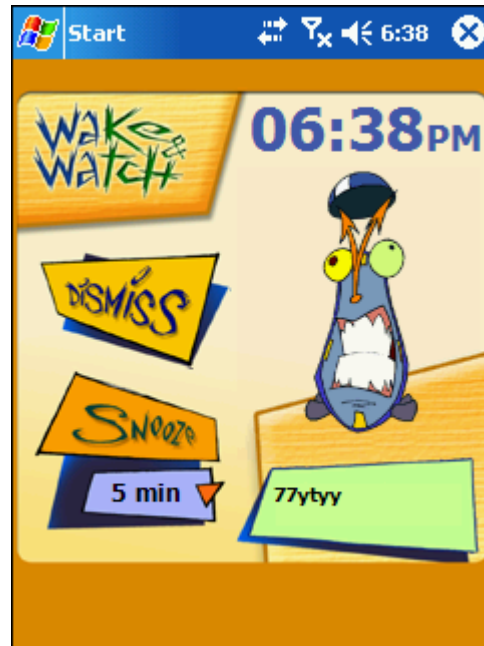
Note. If you do not press the **Dismiss** button at all, WAWA will automatically stop the execution of the alarm options **in one hour**. Thus, the WAWA software will not ring throughout the day if you forget your phone at home.

Press the OK button to accept the new settings, otherwise press the Cancel button.



8. The Reminder

When the alarm goes off, WAWA software automatically launches the **Reminder** form:



First, WAWA software beams the assigned infrared signals, command by command, while taking into consideration the pause length between signals. Then WAWA plays the assigned sound the specified number of times with the specified pauses between repeats.

Press the **Snooze** button, and the **Reminder** will wake up in the specified number of minutes in order to repeat the alarm actions again.

If you ignore the **Reminder**, WAWA will repeat the alarm actions every 5 minutes until you press the **Dismiss** button on the **Reminder** screen. If you do not press the **Dismiss** button at all, WAWA will automatically stop the execution of the alarm options in one hour.

Press the **Dismiss** button to force the **Reminder** to stop execution of the alarm actions.

9. Infrared Setup

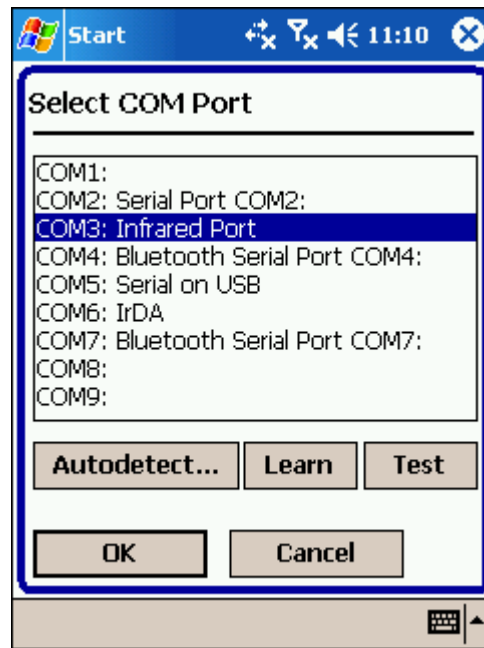
This chapter describes manual configuration of the Novii infrared driver by means of the **Infrared Setup** form. The only goal of the configuration is to find the proper COM-port to be used for controlling your home theater.

Important. It is usually not necessary to tune your Windows Mobile device by means of the



Infrared Setup form, as WAWA software does this automatically. However, if WAWA issues messages like "Failed to learn IR signal" or the learned infrared signal do not work, you should launch the **Infrared Setup** form and tune the infrared driver manually.

To launch the form, just open the **Preferences** menu and select the **Infrared Setup** item.



The form contains a list of COM-ports available on your Windows Mobile device. This list usually looks as follows:

- COM2: Serial port on COM2:
- COM2: IrDA Connection
- COM3: Infrared Port
- COM4: Serial Cable on Bluetooth
- COM9: Serial on USB

Step 1. The best way to tune the driver is to press the **Autodetect** button on the form. In response, WAWA detects the correct COM-port and pre-selects the corresponding line from the list of available COM-ports. Next you should learn the infrared signal from the original control and verify how the learned signal controls your home theater. Do the following:

- Line up the infrared port of the original remote control directly to the infrared port of your windows mobile device.
- Press the **Learn** button on the WAWA screen.
- Press and hold the button on the original remote control, e.g. Power ON, until WAWA



software displays a message “Learned with success!”

- Release the button on the original remote.
- Press the Test button to verify how the learned signal controls your home theater.

Next, take another original remote control (if any are remaining) and repeat learning and testing.

If the learned infrared signals control your home theater, you will not need to go to the **Infrared Setup** form. Just press the OK button and return to the main form.

Step 2. If the learned infrared signal does not work or WAWA issues messages like "Failed to learn IR signal", then you have to tune the driver manually. Just select another COM port from the list of available ports and check again (see above) if WAWA software controls your home theater. Try all the ports on the list until you find the correct one.

TIPS.

- First try the COM port with the description of the type “Serial Port COMx” and “Infrared port”.
- Usually USB and Bluetooth related COM-ports do not suit the needs of WAWA software.

Step 3. If you cannot find the proper COM-port, try to change the way in which your Windows Mobile device beams/receives infrared signals. Open the Start menu of your Windows Mobile device, select the Settings item, and press the Connections tab. Open the **Beam** settings window with the **Receive all incoming beams** and check the box. Change the value of the box to the opposite one and close the window by tapping the **OK** button. Next, return back to the **Infrared Setup** form of WAWA software and repeat steps 1 and 2.

10. Troubleshooting

If WAWA software does not control any home device, try the following:

- Be certain that your Windows Mobile device has the infrared port. Without the infrared port WAWA software will not be able to control any home device.
- Be certain that the batteries in your handheld are not weak. If depleted, replace or recharge the batteries in your handheld and try again.
- Be certain that the distance from your Windows Mobile device to the home equipment is sufficient for WAWA software to work properly. Depending on the model of the handheld and the model of equipment you are trying to control, the maximum range is 3 to 20 feet (1 – 7 meters). See chapter 11 for details.
- Launch the **Infrared Setup** form in order to find the proper COM-port for communication. See chapter 9 for details.

If WAWA software does control your home devices but the range is short, you may try to increase the range by following the instructions below.



While learning, first tap the **Learn** button on the WAWA screen. Next, press the button on the board of your remote control.

- 1) Be sure to pause for 1 sec before pressing the button on the remote control board.
- 2) It is important to hold down the button on the remote control until the handheld beeps. To be sure, hold the button for 3-4 seconds.
- 3) While learning, be sure to point the remote control directly to the infrared port of your Windows Mobile device.
- 4) Perform learning at a 0.2 meter distance (8 inches).

When controlling your home devices:

- 5) Be sure to point the infrared port of your Windows Mobile device directly at the infrared receiver of your TV set.

If problems persist, please consult our website www.novii.tv for additional troubleshooting solutions.

Review the Tutorials, FAQ, Online Support and other information available on our web site. If you still cannot find answers to your questions, please write to us at wawa@novii.com

11. System Requirements

WAWA software works with almost all the modern Pocket PC and Windows Mobile devices which have a touch screen and an infrared port.

Note: If your device has no infrared port, WAWA software will not control your home equipment. However, you may use the software as an alarm by means of assigned sounds.

List of compatible devices:

- Acer n30, n35, n50, [range is over 20 feet *](#)
- Apache PDA, Telecom (New Zeland), [range is about 15 feet](#)
- Asus MyPal A620, A716, 730W, P525, [range is over 15 feet](#)
- Audiovox 6600, 6700, range is 2-4 feet only
- Casio e200, [range is about 15 feet](#)
- Cingular 8125, 8525, [with 8-15 feet range](#)
- Cingular 8525
- Dell Axim X3, X3i, X30, X5, x50, x50v, x51v, [range is 10-25 feet](#)
- Dopod 818, 838, 900, P100, [range is about 10 feet](#)



- Dopod 900, [range is 12-15 feet](#)
- Eten M500, P300
- Fujitsu Siemens Pocket Loox 600, 720, N560, [range is 15-20 feet, up to 35 feet](#)
- Garmin iQue M5 PPC, [range is up to 30 feet](#)
- Hitachi G1000, [range is about 25 feet](#)
- HP iPAQ h1910, h1915, h1920, h1930, h1940, h1945, range is 3-5 feet only
- HP iPAQ h2210, h2215, h4150, h4155, h4350, h4355, range is 3-5 feet only
- HP iPAQ h5150, h5155, h5450, h5455
- HP iPAQ h5550, h5555, [range is 10-15 feet](#)
- HP iPAQ h6300, h6315, h6325, h6340, h6365, [range is 15-25 feet](#)
- HP iPAQ h6400 series, hw6500 series, [range is 10-15 feet](#)
- HP iPAQ hx2100 series, [range is about 10 feet](#)
- HP iPAQ hx2410/2415, hx2490/2495, hx2750/2755, hx2790/2795, [range is 5-15 feet](#)
- HP iPAQ hx4700, hx4705, [range is 15 to 20 feet](#)
- HP iPAQ hw6915, hw6955, range is about 6 feet
- HP iPAQ rw6818, rw6828
- HP iPAQ rx1950, rx1955, range is 2-3 feet only
- HP iPAQ rx3115, rx3715, [range is over 20 feet](#)
- HP iPAQ rz1710, rz1715, range is 2-3 feet only
- HP Jornada 560 series, [range is over 20 feet](#)
- HTC Wizard, HTC Faraday, HTC Universal, HTC P3600
- HTC TyTN, range is 3-6 feet only
- I-mate JasJar, JAmin, [range is 10-15 feet](#)
- I-mate K-Jam, range is 6-8 feet only
- I-mate, I-mate jam, I-mate PDA2K, range is 3-6 feet only
- iPAQ 3100, 3600, 3700, 3800 and 3900 series, [range is over 20 feet](#)
- Medion MD 7200, 40600, 95000, PNA 100, [range is over 15 feet](#)
- Mitac Mio 160, 168, range is 3-6 feet only
- Navman Pin 570, [range is 15-25 feet](#)
- O2 xda, xda, xda II, xda III, xfa atom, xda neo, range is 2-5 feet only



- O2 xda exec, xda mini S, Zinc, [range is 15-20 feet](#)
- Orange SPV M1000, 2000, range is 3-5 feet only
- Orange SPV M500, M600, M5000, [range is up to 20 feet](#)
- Palm Treo 700w, 700 wx, 750v, with 6-12 feet range
- Qtek 2020, 2020i, 2060, 9090, range is 3-6 feet only
- Qtek s100, s110, s200, range is 7-10 feet
- Qtek 9000, 9100, [range is up to 25 feet](#)
- Samsung SCH-i730, [range is over 20 feet](#)
- Samsung SPH-i700, range is 5-10 feet
- Sprint PPC 6600/6700, range is 3-6 feet
- Siemens SX66
- T-Mobile MDA, MDA Pro, MDA Compact, MDA Compact II, MDA vario, [range is up to 15 feet](#)
- Toshiba e310, e330, e335, e350, e355, e400, e405
- Toshiba e740, e750, e755, e800, e805
- ViewSonic Pocket PC V35, V37
- Yakumo
- etc. **

* **Ranges reported by our customers.** Make sure to verify the range of your device before ordering WAWA software!

** The absence of a particular device from this list does not mean that it is incompatible with WAWA software; it simply means that it has not been thoroughly tested.

Warning: The infrared port of some devices, such as HP iPAQ h4155 and others, is slightly underpowered. Therefore, effective range may be 1-1.5 meters. However, for many devices the range is 3-7 meters.

Warning: The program does not support old devices using MIPS and SH3 processors.

12. About NoviiMedia

NoviiMedia is engaged in the development of several lines of products for Palm OS, Windows Mobile, and Symbian OS handheld computers. We are committed to delivering high quality solutions to the growing number of handheld owners who use their devices for fun and entertainment.



Check NoviiMedia web site for FAQ, Online Support, Tutorials and other information about our Windows Mobile products at

<http://www.novii.tv/pocketpc> and www.novii.com

If you cannot find the answers to your questions on the web site, please write us an e-mail at

wawa@novii.com

To receive information about upgrades for this software and additional news from Novii or about our products, sign up for the **NoviiNewsletter** on our website:

<http://www.novii.tv/>